

Welcome to Stoke Mandeville Combined School



Parent Meeting
Tuesday 4th July



Transition from Pre-School to School

- Pre-school communication underway, Mrs King to visit settings
- Liaison with current key workers
- Phased start planned for September



Start of the Reception School Day **(In normal times)**

- 8.40am: Main gate open for all. Reception children to enter and play in the Reception classroom.
- In the first few weeks we will be establishing routines – self-registration, where to put book bags, water bottles, coats, bags etc.



Seesaw Learning Journey

- We will be using Seesaw as an online learning journey.
- Each child will have an individual log in. This will be sent to you before the end of term.
- It can be added to from home and at school.
- Photos and videos can be uploaded.
- Tasks can be set for the children to do as home learning.



'All about Me' Task

- Over the summer, children will have the opportunity to share about themselves using Seesaw.
- Please encourage them to begin selecting photos, pictures and drawings of things to help them talk about themselves in September.
- This may include: photos of themselves and family, photos of a recent event/holiday.
Their favourite thing at home or place to be.
Information about their favourite food, TV programme etc.



In the first Half Term

- We use a topic approach and will start on 'All About Us'.
- We will begin Phonics when all are settled and ready.
- You will be invited to attend a Phonics Evening and Parents' Evenings. Dates to be decided and communicated to you.



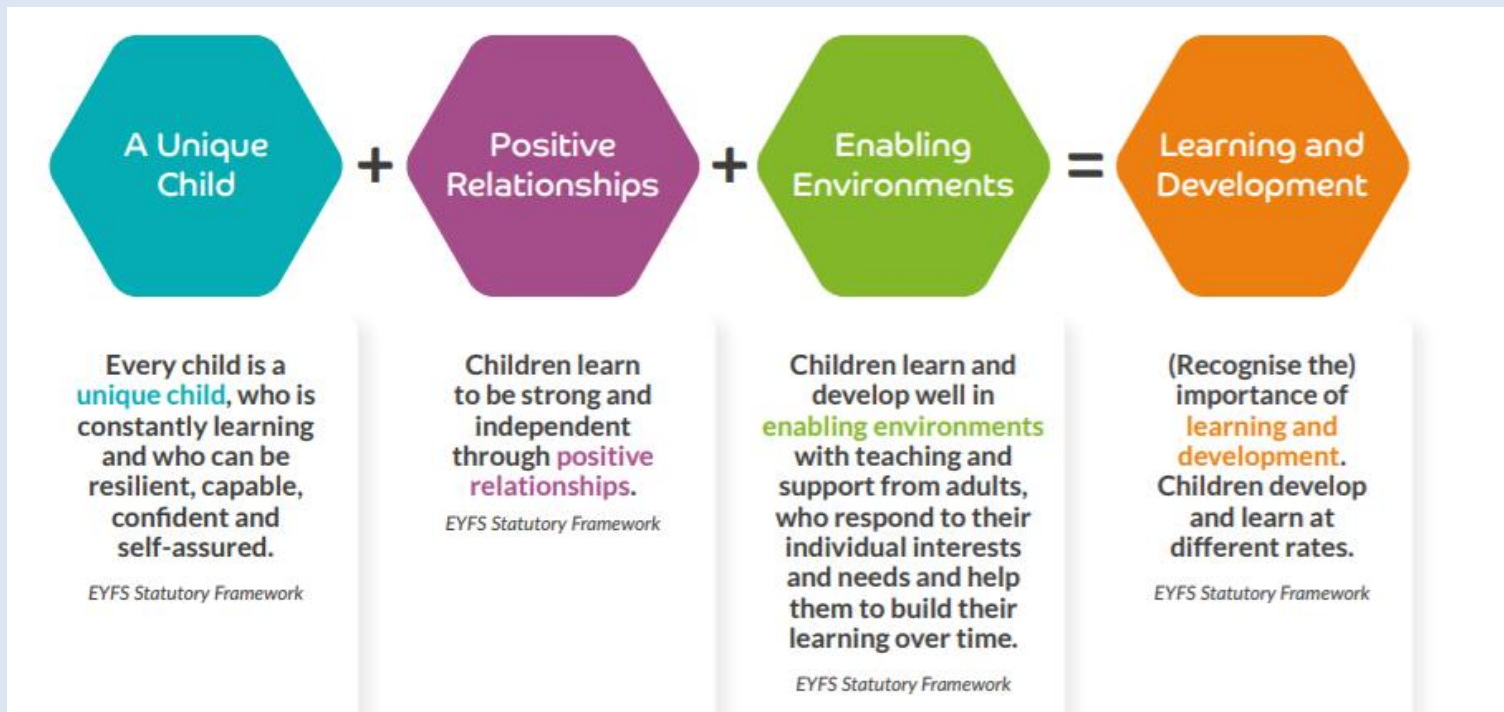
A Typical Day In Reception

- Free flow to settle, register and introduction to first session followed by adult-led and child initiated activities both inside and outside.
- Phonics session.
- Lunch time and play time on the playground.
- Register. An afternoon session – whole class introduction followed by adult-led and child initiated activities both inside and outside.
- Story/singing time
- Home time



The Early Years Foundation Stage (EYFS)

The 4 themes of the EYFS underpin all the guidance:



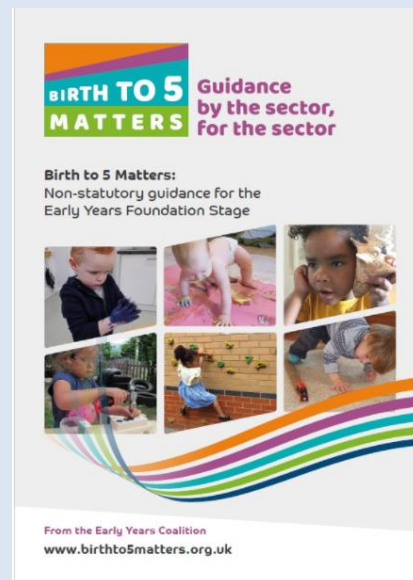


Important documents

- Used as assessment guidance throughout the year.
- Links to the documents are available on the school website and will be posted on Seesaw.



<https://foundationyears.org.uk/wp-content/uploads/2021/09/What-to-expect-in-the-EYFS-complete-FINAL-16.09-compressed.pdf>



<https://www.birthingtomatters.org.uk/wp-content/uploads/2021/04/Birthingto5Matters-download.pdf>



https://assets.publishing.service.gov.uk/government/uploads/system/uploads/attachment_data/file/1007446/6.7534_DfE_Development_Matters_Report_and_illustrations_web__2_.pdf



7 Areas of Learning in our curriculum

- The EYFS curriculum has been revised.
- The 7 areas of learning all have the same overarching titles as previously.

EYFS Early Learning Goals	
CL	Listening, Attention and Understanding
	Speaking
PSED	Self-Regulation
	Managing Self
	Building Relationships
PD	Gross Motor Skills
	Fine Motor Skills
L	Comprehension
	Word Reading
	Writing
M	Number
	Numerical Patterns
UW	Past and Present
	People, Culture and Communities
	The Natural World
	(No ELG)
EAD	Creating with Materials
	Being Imaginative and Expressive



Personal, Social and Emotional Development

- Self-regulation
- Managing self
- Building relationships





Physical Development

- Gross motor
- Fine motor





Communication and Language

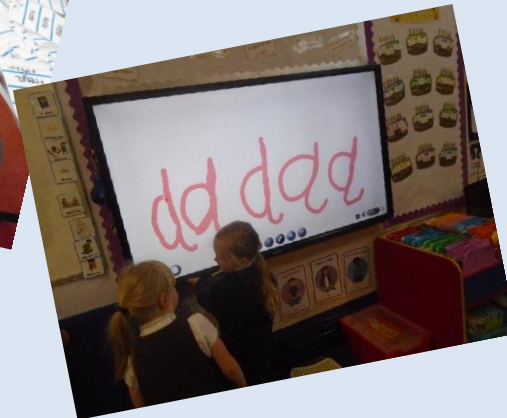
- Listening, attention and understanding
- Speaking



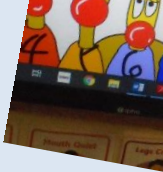


Literacy

- Word reading
- Writing
- Comprehension





- Number
 - Numerical patterns
 - Areas such as space, shape and measure will still be taught
- 
- A cartoon illustration of a computer screen in the top right corner. The screen displays a game interface with various numbers (4, 9, 10) and shapes (circles, squares) on a grid. There are also some colorful characters or icons. The screen is tilted slightly to the right.





Understanding the World

- People, culture and communities
- The natural world
- Past and present
- Technology will still be covered





Expressive Arts and Design

- Creating with materials
- Being imaginative and expressive





Reading and Phonics

- We follow Twinkl's scheme of learning. We will start on recapping Level 1 and then begin learning sounds in Level 2.
- Use of the pure sound
<https://www.youtube.com/watch?v=UCI2mu7URBc>
- We also use visual phonics – actions for every sound, mostly linked to where it is produced.
- Individual reading books will be changed twice a week once we are reading to take books home – usually after the first few weeks of learning Level 2.
- Home learning tasks are also set on Seesaw on Thursday. Please complete these and share your child's learning journey with us.



Outdoor Environment

- Equal access to indoor and outdoor learning.
- Cross curricular opportunities – whatever the weather!
- Named wellies, waterproofs and a change of clothes in school please. Messy play means we are learning and having fun!
- *‘Outdoor play is not just about physical development, it deserves equal weighting to indoor play in terms of providing planned experiences for young children. Outdoors offers a wonderfully rich, multi-sensory environment that is meaningful and stimulating for all young children, from birth to five.’ (Learning Through Landscapes)*



How to prepare your child for September

- Read through the welcome information on Seesaw with your child.
- It is vital that all school items are named clearly – school uniform, PE kit, all footwear, coats, hats, gloves, scarves, water bottles, bags, wellies.
- Introduce your child to all of their new school equipment and clothes – including PE kits!
- Share stories and rhymes as much as possible.



- Encourage independence with toileting and other self-health care. (In school, staff should not have to undertake intimate care.)
- Encourage your child to practise getting dressed as independently as they can.

Top Tip: Don't wear tights on a PE day at the start of the year!

- Provide as many opportunities as possible to practise physical development to strengthen muscles in shoulders, arms and hands (this will help their writing!)
- Help your child to practise recognising their name.

Uniform

- Suppliers of uniform will help you with the right sizes. We currently use:

Print Lab – Unit 1, Goodchild Parkway, Sir Henry Lee Crescent, Aylesbury, Bucks HP19 OPE

www.plschoolwear.co.uk

hello@plschoolwear.co.uk

Bucks Schoolwear - Unit 11, The Vale Industrial Estate, Southern Road, Aylesbury, Bucks HP19 9EW

www.bucksschoolwearplus.co.uk/

enquiries@bucksschoolwearplus.co.uk

Wraparound Care

During normal times we do run a wraparound care provision which means children can arrive at school earlier and be collected after the end of the school day.

This is a chargeable facility.

Please ask at the School Office for more information.

Infant Free School Meals

We can currently offer parents the option of having Universal Infant Free School Meals.

Information of how to order with a provider will be included in the parent handbook.

Initially parents may need to provide a packed lunch as the children start their transition into school.

“Friends”

The Friends of Stoke Mandeville Combined School work together to arrange events for the school community.

These fundraising events support the work of the school and in recent years have seen the purchase of iPads, reading books, science equipment, Reception class resources , cameras and payment for coaches to take the whole school to the pantomime at Christmas.

Please consider if you can become involved and support the school by giving some of your time to help with these events.

What Next?

1. Return all the information to enable us to register your child ASAP.
2. Confirm appointment for the September 1:1 session to meet the team with your child on the 5th or 6th September.
3. Sign up and log into the Seesaw App when the information is provided
4. Talk to your child about their starting of school.
5. Order and purchase uniform with your chosen supplier.
6. Enjoy the summer and we are looking forward to welcoming you to Stoke Mandeville Combined School!



Our provisional plan for starting school

Tuesday 5 th Sept	Time slots to be booked on School Cloud for an adult and the child to visit the school, meet the staff and familiarise themselves with classroom.
Wednesday 6 th Sept	
Thursday 7 th Sept and Friday 8 th Sept	On Thursday all children will start slightly later than the rest of the school at 8.50am through the Reception gate. They will be in school for the morning only. No packed lunch needed on the first day. Collection will be from the Main School entrance at 12.30pm.
	Friday all children will start slightly later than the rest of the school at 8.50am. They will need a packed lunch and then to be collected at 1pm from the Main School entrance.
From Monday 11 th Sept	All children will be in school full time. For this week they will need to be provided with a packed lunch as they will not yet be on the computer system for our meal provider. Children who have requested places

Any Questions?



Remember there is never a silly question!